

BOUNCER



UNCHAINED
LABS

Keep your silicone in check

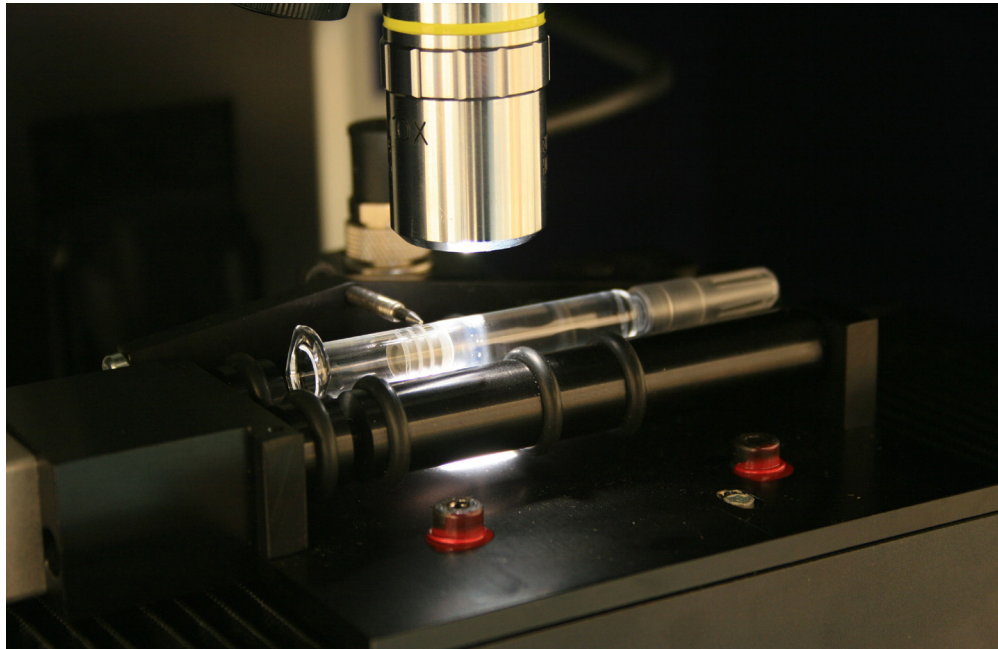
Wonky silicone coatings for injectable devices can jam them up or ooze oil into your drug. Bouncer makes it easy to find out if the coating's too thick, too thin or good to go. Its quantitative measurements on silicone layer thickness and distribution let you find the sweet spot for your device.

Thickness
Distribution
Mass



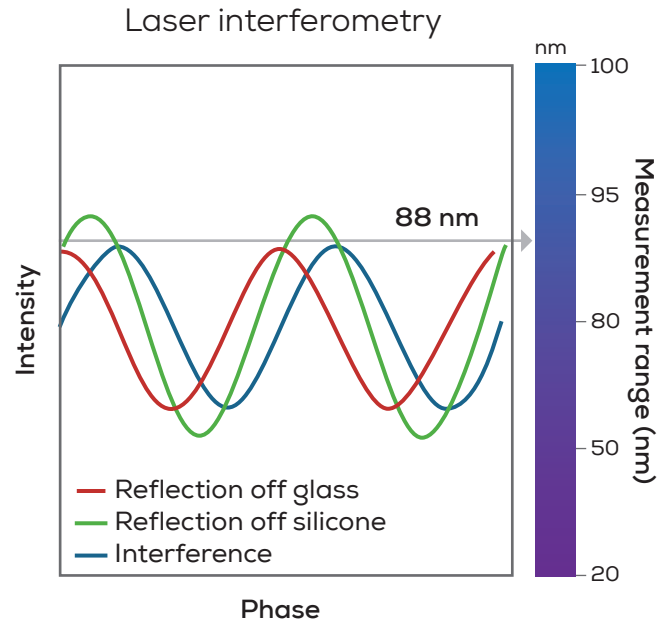
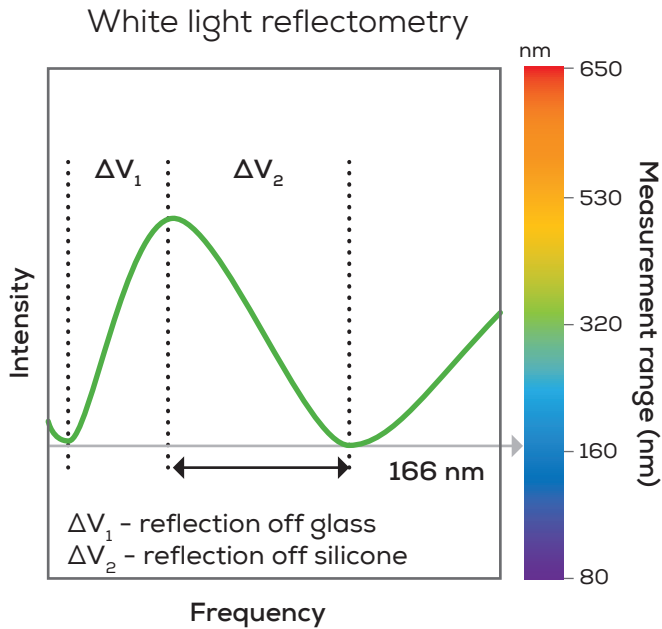
Bring in the muscle

Doesn't matter if you bake it or spray it, Bouncer knocks out silicone thickness and distribution measurements on syringes, cartridges and vials in just a few minutes. Put your device on the stage and Bouncer eyes it up, down, and all around.



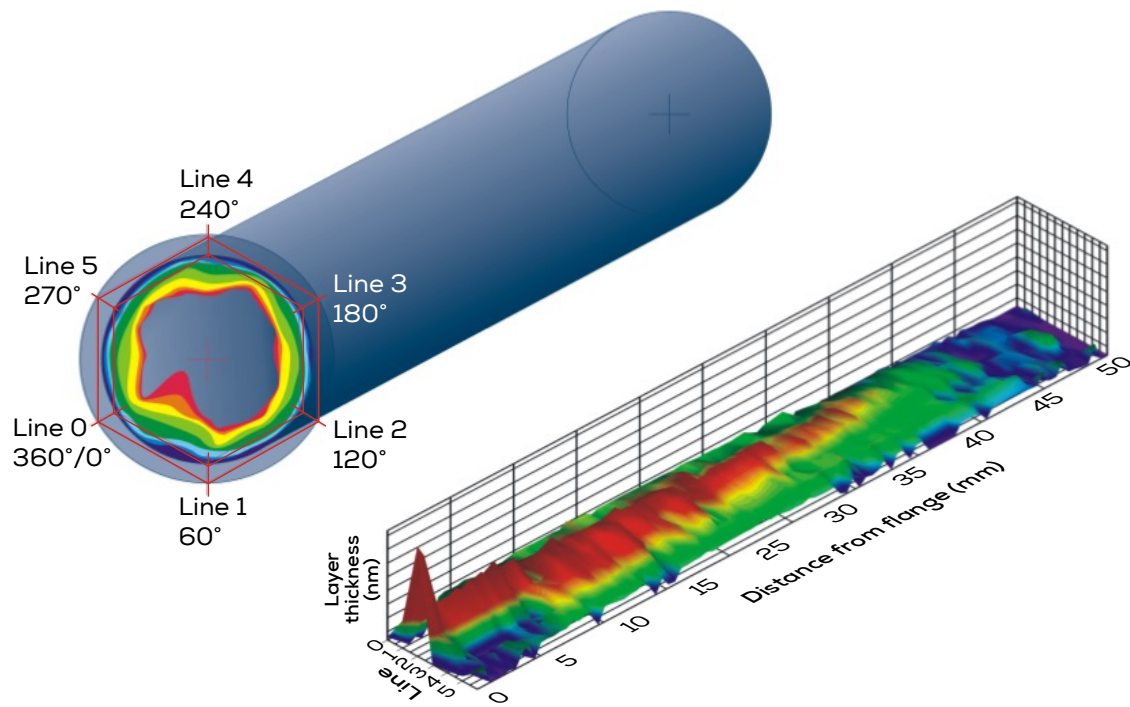
Get the lowdown

Bouncer uses basic white light reflectometry to measure sprayed-on coatings down to 80 nm. Switch to laser interferometry for baked-on glass coatings as thin as 20 nm. Either way, you'll get the blow-by-blow on your device.



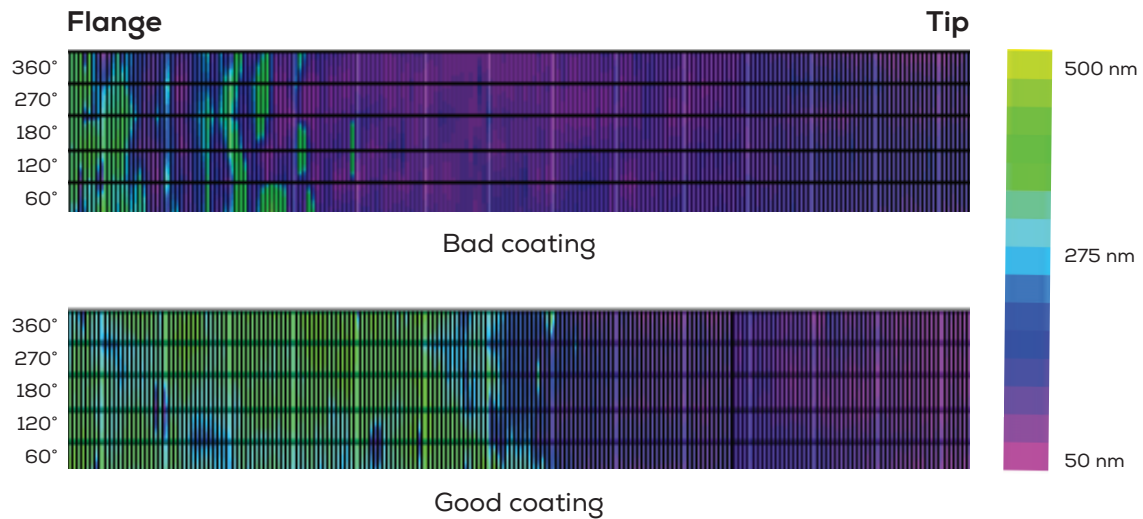
Find your VIPs

To make sure you've got a consistent layer of silicone, Bouncer scopes out the entire inside surface of your device. We're talking tons of data points in full 360°. You get a 2D and 3D map that shows you where you've got too much, too little or just enough.



Ditch the rejects

Too little silicone and your plunger gets stuck. Too much and it's free to float around and make your protein aggregate. Bouncer gives you the thickness and distribution data needed to figure out which coatings work and which should get the boot.



Specifications

Description	Specification
Layer thickness range	20–4000 nm
Materials	Glass (20–4000 nm), plastics (80–4000 nm)
Hardware	Camera: 1 MP color camera Illumination: Halogen illumination Laser: Class 1 Lens: 10x (Bouncer Basic), 10x + 20x (Bouncer)
Software	21 CFR Part 11 compliance
Syringe types	Diameter: 6 mm to 48 mm diameter Length: Up to 90 mm
Measurements	Resolution: 1–20 points/mm, 1–36 lines, max. 200 point/line Layer thickness accuracy: ±5% @150 nm (Bouncer Basic), ±10 nm @50 nm (Bouncer)
Environmental	Temperature range: 16–25 °C Humidity: 0–60% non-condensing
Physical	Weight: 50 kg Dimensions: 60 cm W x 60 cm D x 80 cm H Recommended bench space: 180 cm W x 80 cm D x 110 cm H
Electrical	110–220 V, 500 W



Unchained Labs

6870 Koll Center Pkwy
Pleasanton, CA 94566

Phone: 1.925.587.9800

Toll-free: 1.800.815.6384

Email: info@unchainedlabs.com

© 2022 Unchained Labs. All rights reserved. The Unchained Labs logo, Bouncer and the Bouncer logo are trademarks and/or registered trademarks of Unchained Labs.